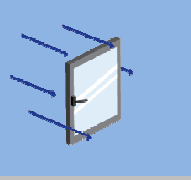
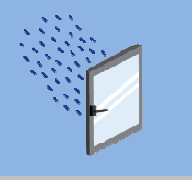
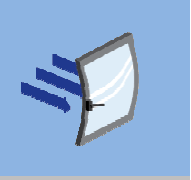
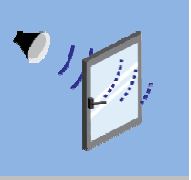
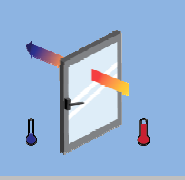


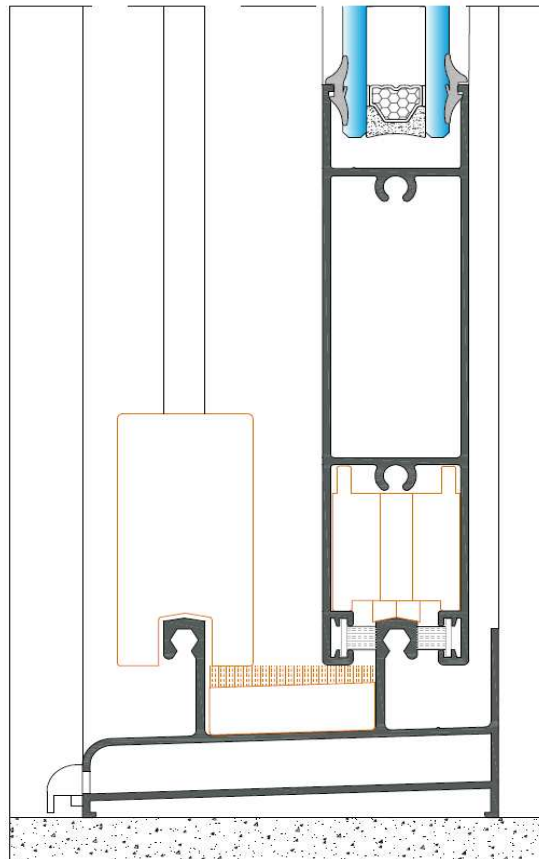
CEPB04 H

SISTEMA DE CORRER

Permeabilidade ao Ar	Estanquidade à Água	Resistência ao Vento	Desempenho Acustico	Transmissão Térmica
				
Classe 3 EN 1026	Classe 4A EN 1027	Classe B1 EN 12211	32 (-1; -3) dB UNE EN 14351	4,37 Uw / W / (m².K) ISO 10077

Sacada de Correr 2 folhas 1,445 x 2,230

Vidro usado 5 / 8 / 4



HASTE

comércio de alumínio, sa